

Age	All ages	Number of people	30 people approximately	Topic	Agro problematics
Date					
Purpose			Time	2 hr	
Name of the activity			Expected learning		
WORKSHOP			Analyze problems through a bigger understanding of agro knowledge		
sequence				Resources	
Presentation (30 minutes)					
A presentation of synthetic biology concepts and iGEM will be given.				Material visual de apoyo	
Experts presentation ( 45 minutes)					
A) The tracks and the rubric to be followed to make your proposal will be presented.				Rubric	
They will be divided into teams of 4 to 5 people and assigned a track.					
B) Proposal (15 minutes)					
Once the track is defined you will have 45 minutes to choose a problem related to your track, you will have to make use of synthetic biology and you will have to justify why your proposal is a good solution.				Sheets with the questions: What is the importance of probelmatics? What does your solution consist of? What are your stakeholders? What strategies would you implement to make synthetic biology known?	
C) Submission of proposals (30 minutes)					
El equipo presentará su propuesta frente a los jueces y se les realizarán 2 preguntas				No material required	
D) Awards (10 minutes)					
The team with the best performance will be awarded				Recognition and awards	
Farewell and invitation to follow us on social networks (5 minutes)					

# PESTICIDES AND ITS CORRECT DISPOSITION

Ing. Ramón Chavez Monrreal  
Phytotechnist agronomer

# TOPICS

**01.**

PESTICIDES

**03.**

METHOD OF ACTION

**05.**

CORRECT USE

**02.**

TYPES

**04.**

IMPACT



# PESTICIDES

Substance or mixture of substances intended to:

- **Prevent**
- **Repel**
- **Fight**

**Pests** - Potentially harmful life forms that interfere with crop production.



# Types



Insecticidas



Acaricidas



Herbicidas



Nematicidas



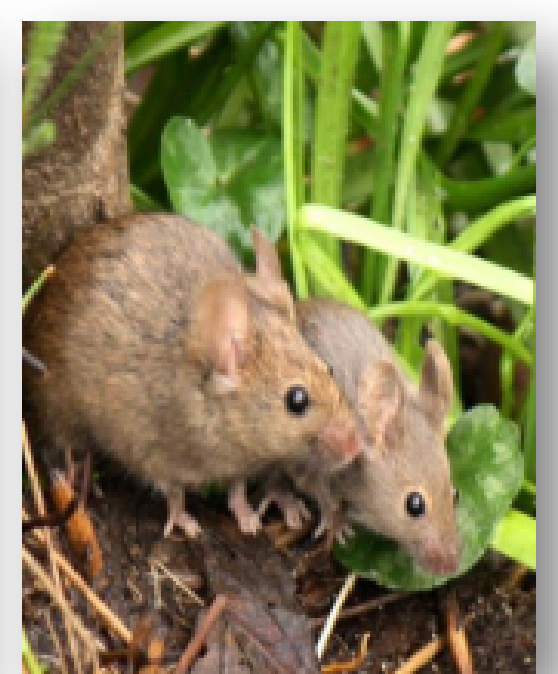
Bactericidas



Fungicidas



Molusquicidas



Rodenticidas



# METHOD OF ACTION



**Contact**



**Systemic**



**Ingestion**



**Repellent**



# CLASSIFICATION OF PESTICIDES ACCORDING TO PERMANENCE



**Very low**

**Less than 4  
weeks**



**Low**

**From 4 to 26  
weeks**



**Moderate**

**From 27 to  
52 weeks**



**High**

**From 1 to  
20 years**



**Permanent**

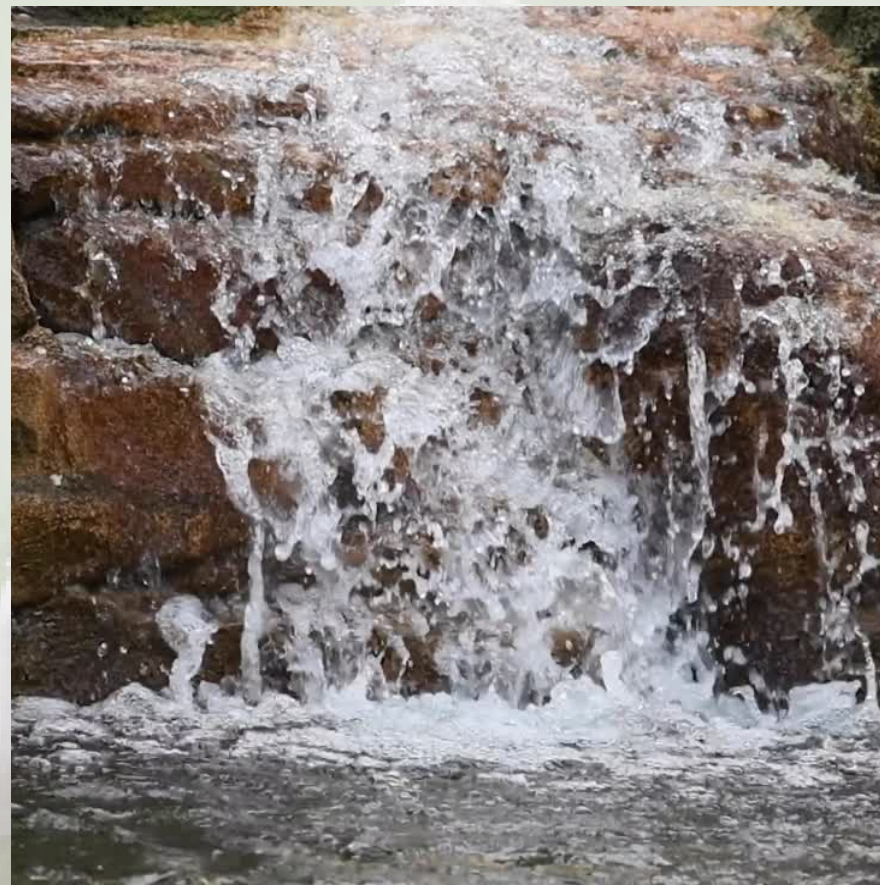
**Over 20  
years**



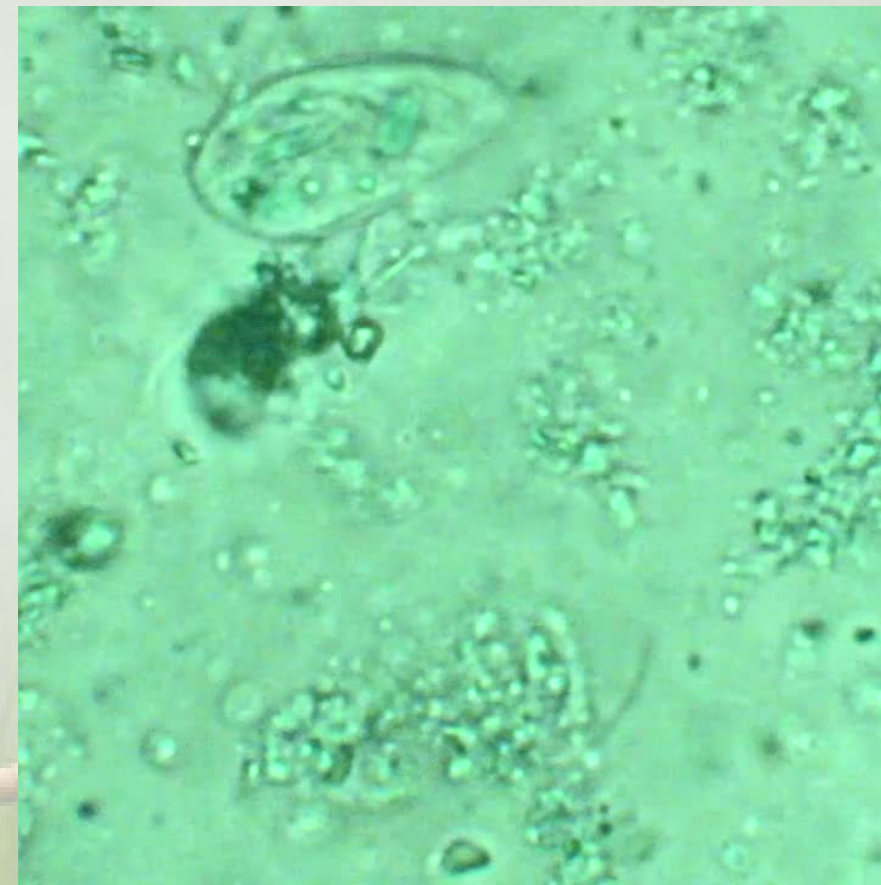
# ENVIRONMENTAL IMPACT OF PESTICIDES



**Soil  
contamination**



**Groundwater  
reserves**

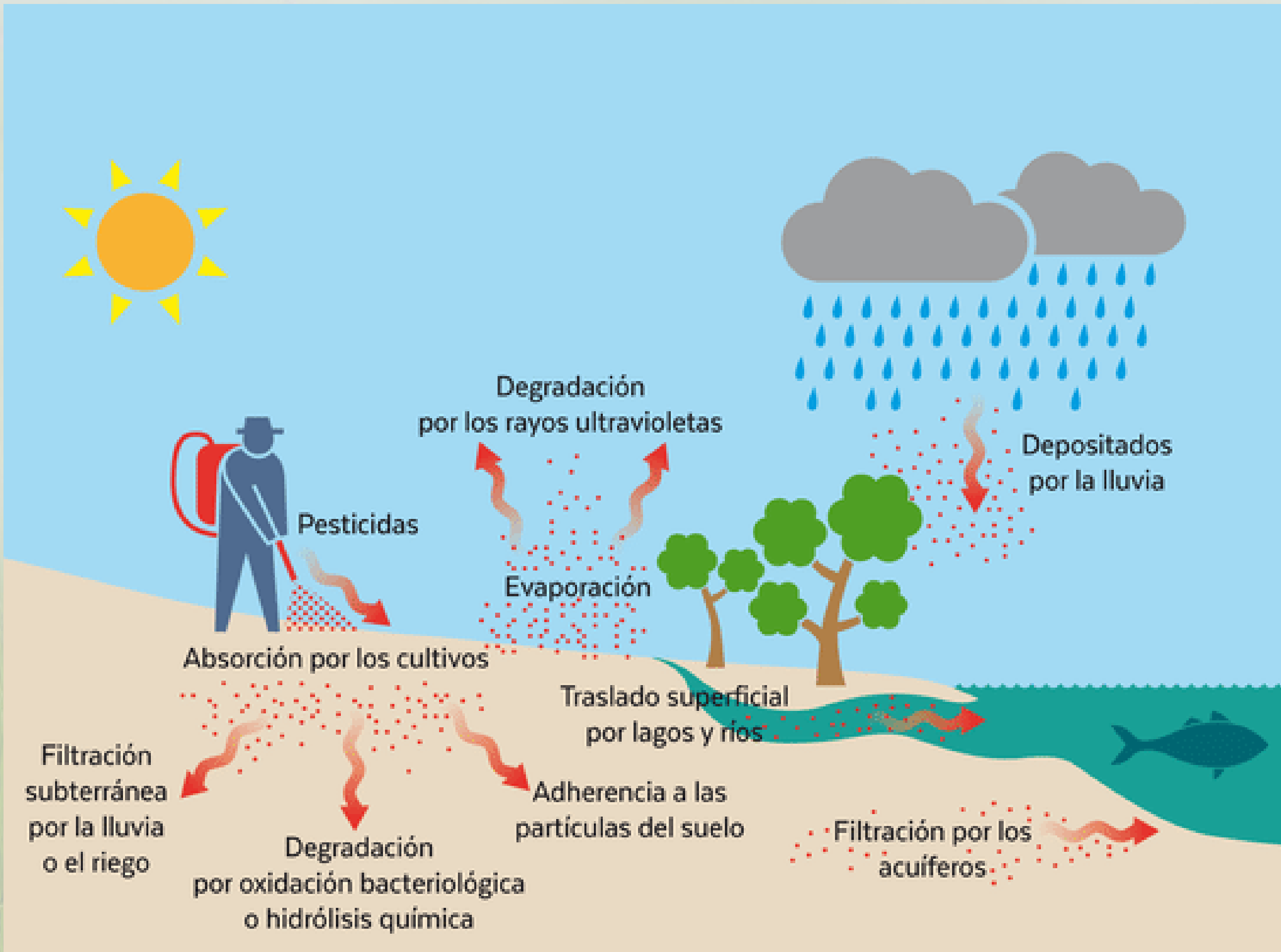


**Biome  
imbalance**



**Health**





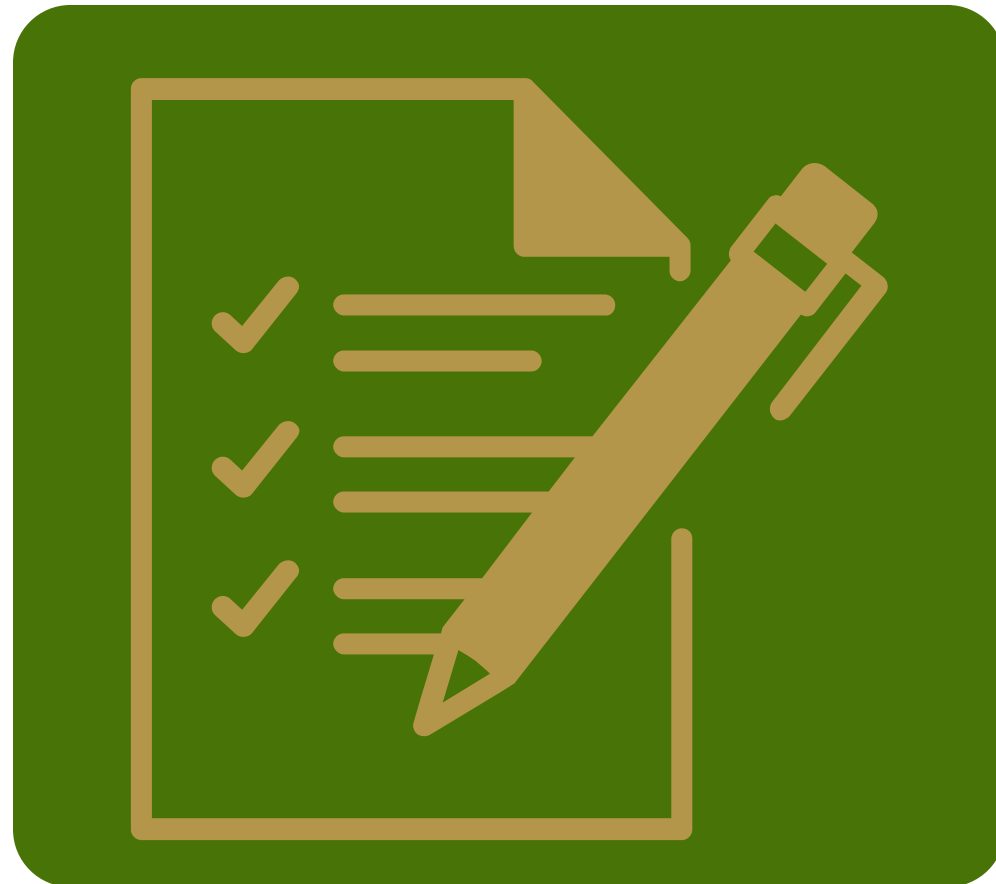
## ENVIRONMENTAL IMPACT

This contamination can occur through a number of reactions:

- Volatilization
- Pluvial precipitation
- Infiltrations
- Leaching

# Correct Use and Disposal

## Harvest practices



It must be ensured that harvests do not exceed the Maximum Permissible Limit in Mexico and the destination market.



The safety interval provided on the labels of the applied products must be complied with.

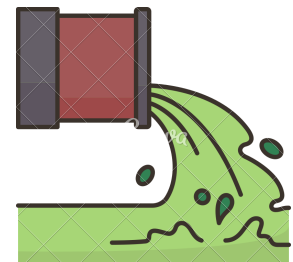


Harvesting containers must be exclusively used for that purpose and be made of non-toxic materials.



**It is important to  
take these  
measures to avoid  
environmental  
damage.**

## Disposal of pesticides



### **Do not empty them into sewers**

Wastewater treatment plants are not designed to remove all chemical-toxic elements. Emptying them into sinks, toilets and sewers pollutes and is against the law.



### **Read the label**

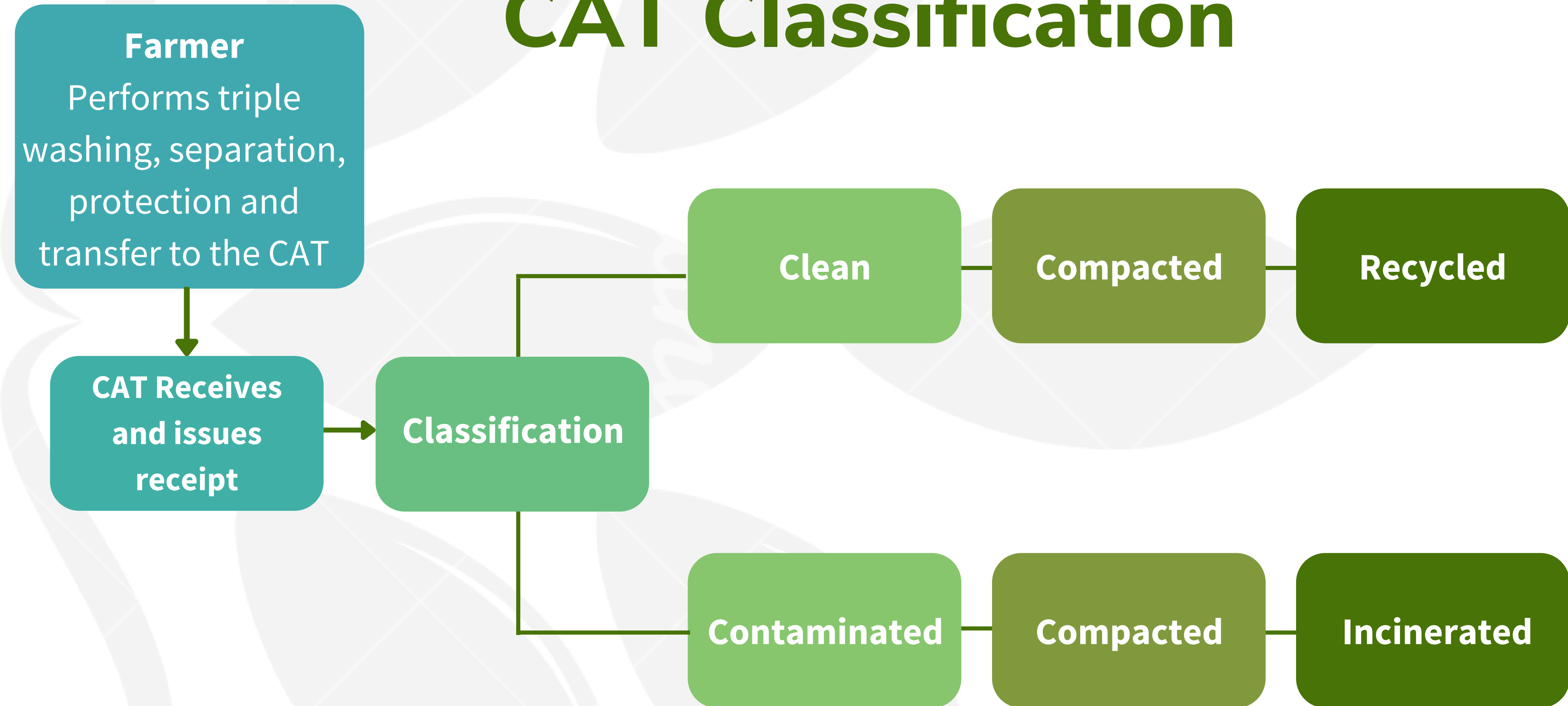
For proper removal, you must read the label in the "Storage and disposal" section or take them to a hazardous waste collection center when specified.



### **Protection equipment**

After emptying a pesticide container, rinse it properly for recycling. Wear protective clothing, chemical resistant gloves, and safety glasses when doing this. Do not reuse for anything else!

# CAT Classification







# THANK YOU!

Questions?